



Multi-interfaces 4K HDR studio monitors



DT-U28E
DT-U31E



12G-SDI

4x 3G-SDI

HDMI 2.0

Video over IP

4K panel with multiple 4K interfaces

HLG-HDR & PQ-HDR Capability

Built-in 3D LUT auto calibration

Remote control via web browser





DT-U28E



DT-U31E

KEY FEATURES

4K native LCD panels

DT-U series studio monitors adopt 28" / 31.5" 3840×2160 pixel 4K UHD resolution LCD panels with LED backlighting.

Wider Color Gamut

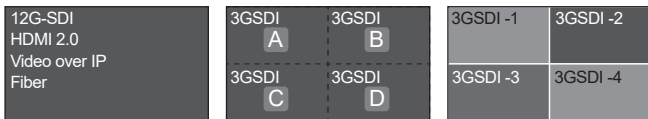
DT-U31E support 100% DCI-P3 and 84% ITU-R BT.2020 Colour Gamut; DT-U28E support 100% Rec.709 and 80% DCI-P3 Colour Gamut.

Multiple 4K interfaces

DT-U series monitors support 12G/6G/3G-SDI input, 4x 3G-SDI quad link input (Both square division and Interleave), 4K60p HDMI 2.0 input, and by optional plug-in SFP adaptor, the DT-U monitors support additional SFP and video over IP SMPTE-2022 input.

4 independent SDI quadview mode

You can also input 4x independent SDI sources to quadview; support different formats SDI mixed input (require the same frame rates).



Single link 4K input

Quad link 4K input

4 independent SDI quadview

HLG and PQ Capability

DT-U series monitors support HLG HDR and ST.2084 PQ HDR display to present realistic image.

Low latency mode

Support Low latency mode (less than half frame) under 4K input sources, the special image processing mode for lip-sync monitoring.

Webserver IP remote control

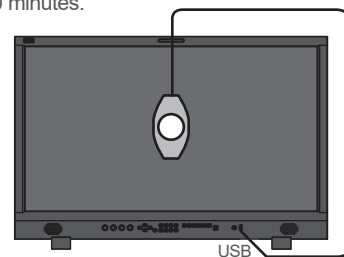
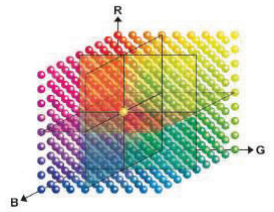
Connect the monitor in LAN and read the monitor status or set menu by computer web browser, which enables studio administrators to control all the monitors remotely.

Other features

- Gamma preset selection: 1.8, 2.2, 2.4 and 2.6.
- TSL 3.1 and 4.0 UMD support
- On-screen TALLY display
- SDI Timecode (LTC, VITC1&2) display
- AFD (Active Format Description) info display
- Frame/Field view selection
- R/G/B/Mono, False color, Zebra stripes display
- Focus assist display mode
- H/V delay, freeze frame display mode
- Safety area selection: 80%, 85%, 90%, 93%, 95%
- Scale marker: 4:3, 13:9, 14:9, 15:9, 1.85:1, 2.35:1
- Native scan, over scan and normal scan selection
- GPI control via RS485 port connection
- USB firmware upgrade

3DLUT auto colour calibration

DT-U series monitors support 3DLUT 17x17x17 precise auto calibration, with built-in colour generator and calibration software. They currently support X-rite i1 Display (special version) and will support JETI Specbos 1211 (near-future update). Probes directly plugged into monitor USB port to auto calibrate. The calibration process time is as short as 30 minutes.



Built-in 3DLUT calibration software, Directly connect colour sensor probe to monitor USB port, and the monitor will calibrate itself automatically.

Built-in De-log LUTs

DT-U series monitors have built-in De-log LUTs including JVC J-log1, ARRI Log-C, SONY S-log2, S-log3, Canon C-log, Panasonic V-log and RedLogFilm LUTs, to convert to ITU-Rec.709 directly.

User 3DLUT upload

DT-U series monitors support user 3DLUT cube files to upload by USB, which is convenient for colour creation during post-production monitoring.

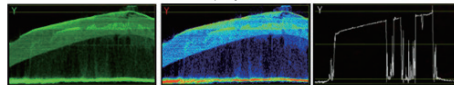
Waveform/Vector/Histogram

Support waveform selection display (Y, Cb, Cr, R, G, B), and single lines selection mode; support vector scope and R/G/B/Y histogram display, with multiple display position, size and colour selection.



Y, Cb, Cr, R, G, B selection display

Vector scope with colour selection



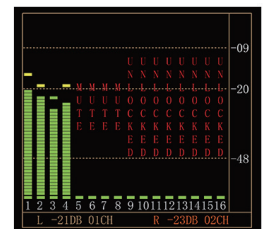
Colour selection and single line mode



R/G/B/Y histogram

16-ch audio meters with alert and output selection

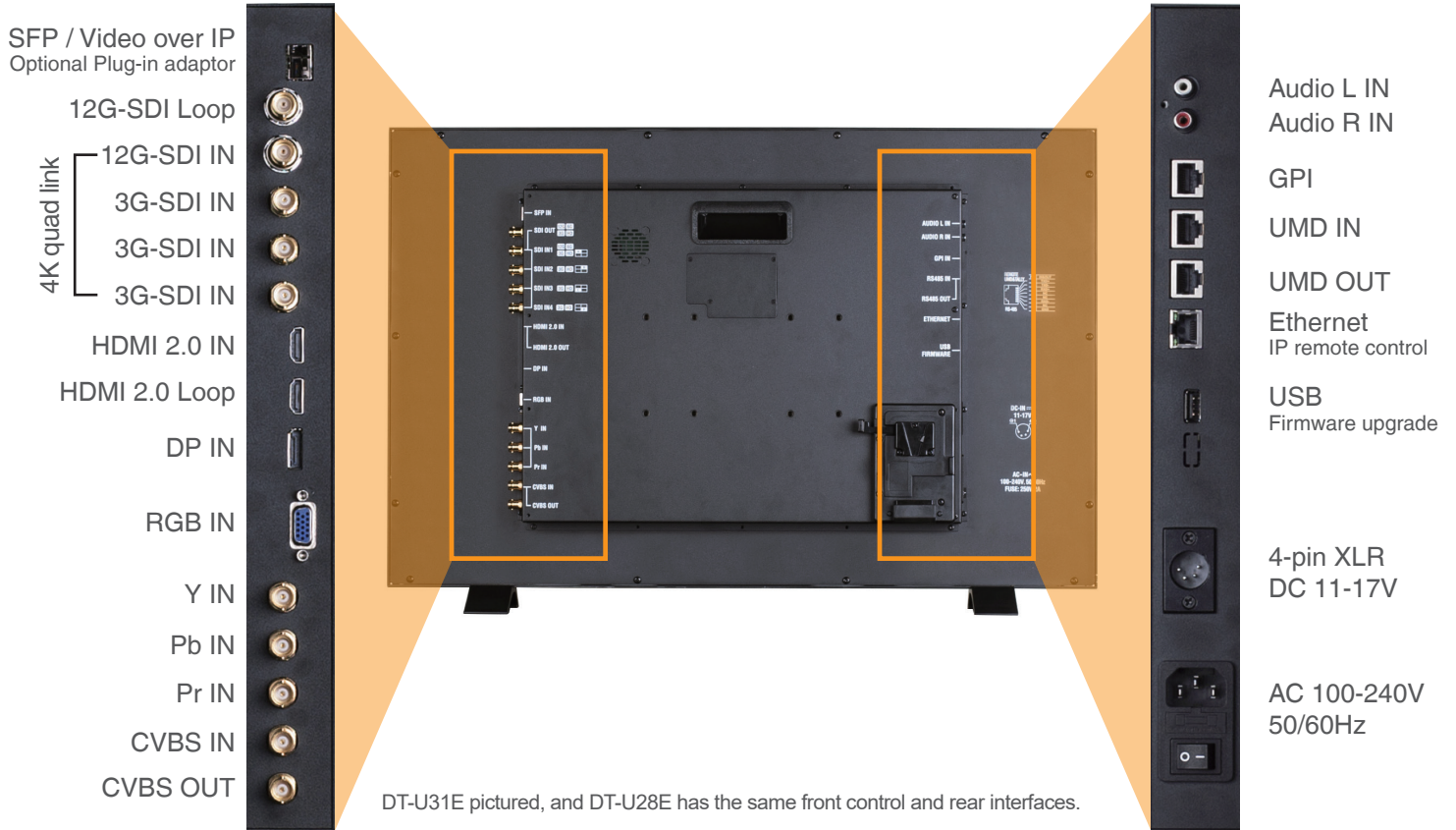
Support de-embed audio from SDI and HDMI, and display 16-ch audio level meters, with audio abnormal alerts info displayed on each audio bar. You can also select any 2 channels audio to output via 3.5mm socket or speakers. The audio meter pattern position can be selected from one of four corners, and you can select to display only 2 channels, 8 channels, and full 16 channels. Also scale markers, alert info, and translucent of the audio meter pattern are selectable.



Front Controls



Rear Terminals



Compatible video formats

SDI

4096×2160p (60 / 59.94 / 50 / 30 / 29.97 / 25 / 24 / 23.98)

3840×2160p (60 / 59.94 / 50 / 30 / 29.97 / 25 / 24 / 23.98)

2048×1080p (60 / 59.94 / 50 / 30 / 29.97 / 25 / 24 / 23.98)

2048×1080i (50 / 59.94 / 60)

1080p (60 / 59.94 / 50)

1080i (60 / 59.94 / 50); 1080p (30 / 29.97 / 25 / 24 / 23.98)

1080psf (30 / 29.97 / 25 / 24 / 23.98)

720p (60 / 59.94 / 50)

480i (59.94), 576i (50)

YPbPr

1080p (50 / 60), 1080i (50 / 60), 720p (50 / 60), 480i / 576i / 480p / 576p

CVBS

NTSC/PAL

HDMI

4096×2160p (60 / 59.94 / 50 / 30 / 29.97 / 25 / 24 / 23.98)

3840×2160p (60 / 59.94 / 50 / 30 / 29.97 / 25 / 24 / 23.98)

1080p (60 / 59.94 / 50 / 30 / 29.97 / 25 / 24 / 23.98)

1080i (60 / 59.94 / 50)

720p (60 / 59.94 / 50)

480i / 576i / 480p / 576p

DP

1080p (60 / 59.94 / 50 / 30 / 29.97 / 25 / 24 / 23.98)

RGB

640×480, 800×600, 1024×768, 1152×864,

1280×768, 1280×960, 1280×1024, 1600×1200

Specifications

MODEL	DT-U28E	DT-U31E
LCD Display		
Size	28 inches wide format	31.5 inches wide format
Display area	648.9mm×369.3mm	717.4mm×413.85mm
Resolution	3840×2160	3840×2160
Colour depth	10-bit 1.073G	10-bit 1.073G
Aspect ratio	16:9 (4:3 adjustable)	16:9 (4:3 adjustable)
Brightness	300cd/m2	300cd/m2
Contrast	1000:1	3000:1
Viewing Angle	170°(H) / 160°(V)	178°(H) / 178°(V)
Surface treatment	Non-glass	Non-glass
Backlighting	LED	LED
Input Signal		
SDI input	12G/6G/3G/HD/SD-SDI ×1 3G/HD/SD-SDI ×3	12G/6G/3G/HD/SD-SDI ×1 3G/HD/SD-SDI ×3
HDMI input	HDMI 2.0 ×1	HDMI 2.0 ×1
SFP/IP input	SFP×1 or IP×1 (Optional plug-in adaptor)	SFP×1 or IP×1 (Optional plug-in adaptor)
Component input	Y×1; Pb×1; Pr×1	Y×1; Pb×1; Pr×1
Composite input	CVBS ×1	CVBS ×1
RGB input	RGB ×1	RGB ×1
DP input	DP ×1	DP ×1
Audio input	RCA L×1; R×1	RCA L×1; R×1
UMD input	RS485 ×1	RS485 ×1
GPI input	RS485 ×1	RS485 ×1
LAN input	RJ45 ×1	RJ45 ×1
USB input	USB-A Front ×1; Rear ×1	USB-A Front ×1; Rear ×1
Output Signal		
SDI loop output	12G/6G/3G/HD/SD-SDI ×1	12G/6G/3G/HD/SD-SDI ×1
HDMI loop output	HDMI 2.0 ×1	HDMI 2.0 ×1
Composite loop output	CVBS ×1	CVBS ×1
Audio output	3.5mm ×1; Speaker ×2	3.5mm ×1; Speaker ×2
UMD output	RS485 ×1	RS485 ×1
General		
AC Input	AC 100-240V 50/60Hz	AC 100-240V 50/60Hz
DC Input	DC / battery 11V-17V	DC / battery 11V-17V
Power consumption	Max 45W	Max 55W
Working temperature	0°C - +40°C	0°C - +40°C
Working humidity	10% - 90%	10% - 90%
Storage temperature	- 15°C - + 60°C	- 15°C - + 60°C
Storage humidity	10% - 90%	10% - 90%
Dimensions	672×458×110mm	748×509×110mm
Net weight	11.1 Kg	12.45 Kg

www.jvcpro.eu

E. & O.E. Design and specifications subject to change without notice
Copyright 2018, JVCKENWOOD Corporation. All Rights Reserved.

